



Population

■ General Demographic Features

	WBGS Total	West Bank	Gaza
Total population			
1997 census:	2,895,683	1,873,476	1,022,207
2007 census:	4,016,416	2,350,583	1,499,369
Mid-2017 ¹ :	4,950,000	3,010,000	1,940,000
2020 projected ² :	5,370,000		
Growth rate (2016)³	2.8%	2.5%	3.3%
Crude birth rate per 1,000 pop. (2016)³	30.9	28.5	35.8
Crude death rate per 1,000 pop. (2016)³	3.5	3.7	3.3
Fertility (2014)	4.1	3.7	4.5
Median age (2016)⁴	20 years	21.2	18.4
Sex ratio (male-female at birth, 2016)³	103.3	103.3	103.3
Dependency ratio (2016)⁴	72.3	66.6	82.1
Life expectancy at birth, male/female (2016)³	72.1/75.2	72.4/75.5	71.4/74.6
Population density (persons/km², mid-2017)¹ (Israel in comparison, 2016: 380.2 ⁴)	823	532***	5,324

** Incl. East Jerusalem.

*** excluding Area C, it is way over 1,100 people per km².

Sources: ¹PCBS and National Population Committee, *The International Population Day 11/07/2017*, July 2017.

²PCBS, *Press Release on World Environment Day*, 4 June 2015.

³PCBS, *Palestinians at the End of 2016*, Dec. 2016.

⁴Excl. WBGS, CBS, *Statistical Abstract of Israel*, No. 68, 2017.

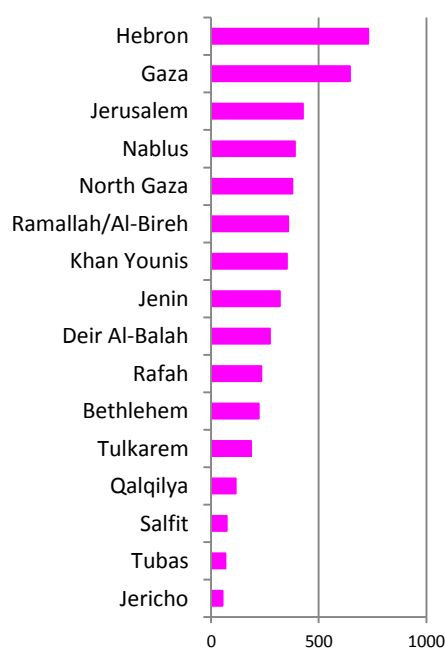
Estimated Palestinian Population by Locality, 2016

Locality	Governorate	City only
Jenin	318,958	48,479
Tubas	66,854	21,487
Tulkarem	185,314	60,173
Qalqilya	113,574	51,969
Salfit	72,279	10,673
Nablus	389,329	153,061
Ramallah/AI-Bireh	357,969	35,140/48,887
Jerusalem	426,533	264,937 ^a
Jericho/AI-Aghwar	53,562	23,220
Bethlehem	221,802	31,799
Hebron	729,194	215,452
Total West Bank	2,935,368	
North Gaza	377,126	171,642 ^b
Gaza	645,204	583,870
Deir Al-Balah	273,381	72,409
Khan Younis	351,934	185,250
Rafah	233,490	164,000
Total Gaza Strip	1,881,135	
Total WBGS	4,816,503	

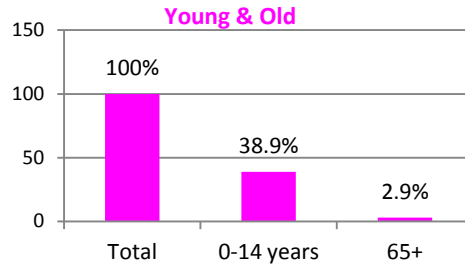
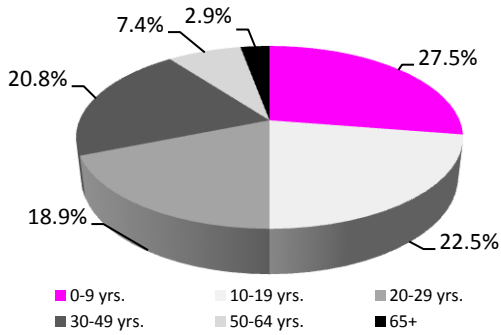
^a annexed East Jerusalem; ^b Jabalia

Source: PCBS, *Population Projections, Annual Statistics*.

Population Distribution (in '000s)



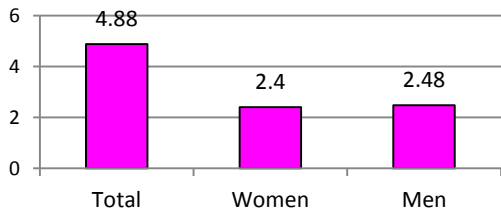
Age Structure, Palestine



38.9% of the total population is **0-14 years old** (WB: 36.6%, GS: 42.6%) and **2.9% 65 or older** (WB: 3.3%, GS: 2.4%).

Source: PCBS, *Palestinians at the End of 2016*, December 2016; PCBS, *International Population Day*, 11 July 2017.

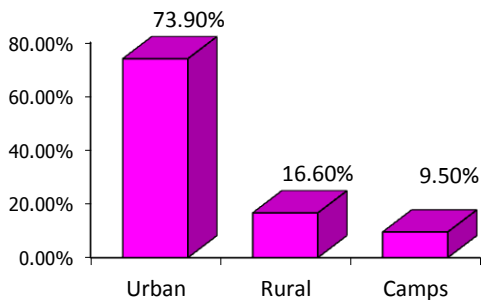
Population by Sex (in million)



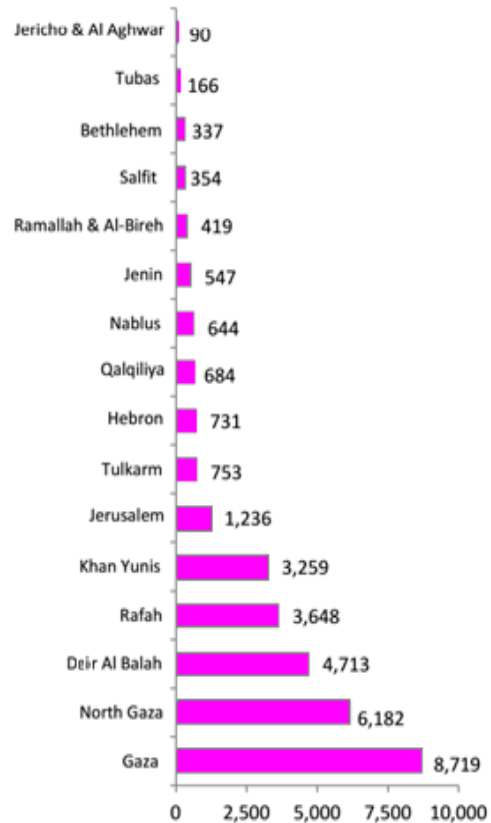
Of the estimated 2016 **population** of 4.88 million, 2.48 million were **males** (WB: 1.51 million, GS: 971,857), 2.40 million **females** (WB: 1.46 million, GS: 940,410) (PCBS, *Palestinians at the End of 2016*, Dec. 2016).

Population Distribution by Place of Living

In mid-2016, 73.9% of the population lived in **urban** areas, 16.6% in **rural** areas, and 9.5% in **refugee camps** (PCBS).



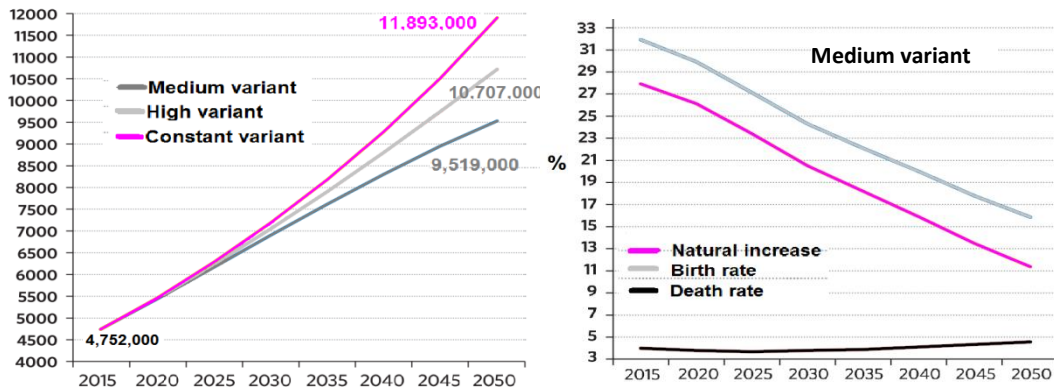
Population Density, 2016 (capita/km²)



Source: PCBS, *Statistical Yearbook of Palestine 2016*, Dec. 2016.

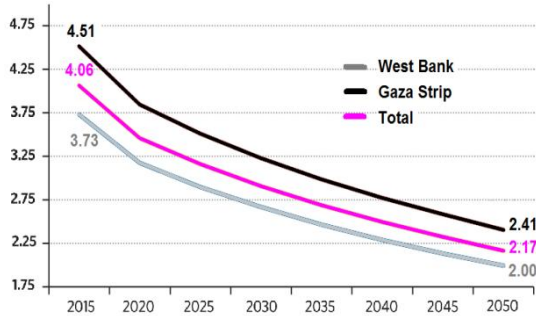
Palestine has a **fast urban-population-growth rate** (3.2%, compared to a regional rate of 2.5%, UN Department of Economics and Social Affairs, Population Division: *World Urbanization Prospects, 2015*, <https://esa.un.org/unpd/wup/>), and its urban population has almost tripled in the past 25 years.

Population Projections, 2015-2050



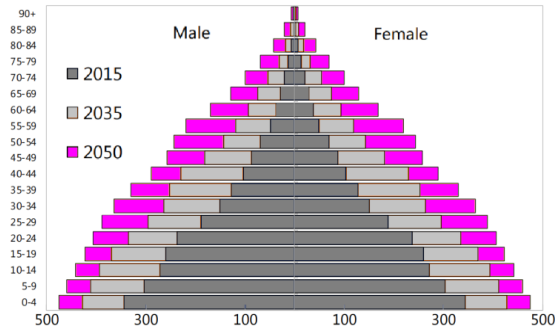
Source: Prime Minister's Office, State of Palestine & UNFPA, PALESTINE 2030: Demographic Change, December 2016.

Projected Fertility Trends, 2015-2050



Source: PALESTINE 2030: Demographic Change, Dec. 2016.

Sex-Age



Source: IMF, West Bank & Gaza- Report to the AHLC, Aug.2017.

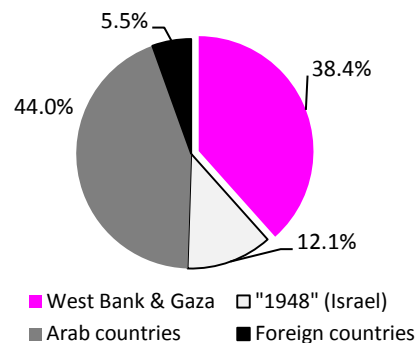
■ Distribution of the Palestinian people worldwide

The estimated Palestinian world population has increased 9-fold since the Nakba from 1.37 million in 1948 to an estimated 12.7 million by the end of 2016, some 6.3 million inside historic Palestine (4.88 million in the WBGs). Based on current growth rates, it is expected that this number will rise to 7.1 million by 2020 (PCBS, *Special Statistical Bulletin on the 68th Anniversary of the Palestinian Nakba*, May 2016).

Palestinian Population Worldwide

		Population	in %	Total
Inside	West Bank & Gaza Strip	4,884,336	38.4%	6,416,047
	Israel proper ("1948")	1,531,711	12.1%	
Outside	Arab countries	5,594,683	44.0%	6,290,360
	Foreign countries	695,677	5.5%	
Total				12,706,407

Source: PCBS, *Palestinians at the end of 2016*, December 2016.



■ Population of Israel

	Population* (estimates, July 2017)	2016 annual growth rate	Fertility rate(2016)	Median age (2016)	Projection (medium variant)	
					2020	2040
Jews	6,507,800 (74.7%)	1.8%	3.16	31.6	7.343,100	10.407,200
Arabs	1,819,300 (20.8%)	2.2%		22.9	1,954,800	2.815,900
- Muslims	1,506,000 (2016)	- 2.4%	3.29	- 21.8		
- Christians	131,600 (2016)	- 1.4%	2.05	- 35.1		
Druze	138,300 (2016)	1.5%	2.21	27.5		
Others ¹	342,600 (2016)	3.9%	1.64	35.9		
Total	8,720,400	2.0%	3.11	29.8	9.297,800	13.223,100

*NB: The CBS estimates differ from that of the Population, Immigration & Border Authority, because they only count Israelis living in Israel, while the Authority counts all Israeli citizens no matter where they are. The figures do not include 183,000 foreigners residing in Israel (as of the end of 2015).

¹ Non-Arab Christians and people not classified by religion.

Sources: CBS, *Statistical Abstract 2017*; CBS, Time Series Data Bank, July 2017.

According to the Israeli CBS (*Statistical Abstract 2017*):

- In 2016, Israel's population grew by 2%. **Natural increase** accounted for 163,600 people (Table 2.12).
- In 2016, children **aged 0-14** in Israel made up 28.3% of the total population (Jewish & Others children: 25.3%, Arab: 33.7%) (Table 2.3).
- In 2015, the average **life expectancy** for Israeli Jews was 80.9 years for men, and 84.5 years for women (3-4 years higher when compared to Arabs in Israel: 76.9 and 81.1 years).
- Israel's **population density** at the end of 2015 was 380.2 people/km² (excl. the WBGS) (Table 2.23).
- Some 76.6% of the Jewish population of Israel at the end of 2016 was **born in Israel** (Table 2.9).
- Between the establishment of Israel in 1948 and the end of 2016, over 3.2 million **new immigrants** came to Israel, about 42% of them since 1990. In **2016**, 25,977 new immigrants arrived – 6.9% less than in 2015. Most came from the Former Soviet Union (55.6%), mainly from Russia and Ukraine, as well as from France (16.3%) and the US (10.3%) (Table 4.4).
- Israel's **migration balance** (difference between the number of residents living more than a year abroad and the number of Israelis who returned to Israel after spending at least a year abroad) was negative in 2015, with a net loss of 8,200 people (Table 4.10).
- In 2016, 45.5% of the Israeli Jews were originally from **Israel**, 30.3% from **Europe and America**, 13.9% from **Africa** and 10.3% from **Asia** (Table 2.9).
- At the end of 2016, the **worldwide Jewish population** was estimated at 14.5 million, of which 6,446 million (44%) lived in Israel. The largest Jewish community **outside Israel** lived in the US (5.7 million), followed by France (456,000), Canada (390,000), UK (290,000), the Russian Federation (181,000), Argentina (176,000), Germany (117,000) and Australia (113,000) (Table 2.11).

Recommended Research Sources:

<http://www.pCBS.gov.ps>

<http://www.cbs.gov.il/engindex.htm>

<http://www.palestineremembered.com/Acre/Palestine-Remembered/Story559.html>

Harvard University, *Population Projections for Socioeconomic Development in the Gaza Strip*, June 2006.

Heiberg, M. & G. Ovansen. *Palestinian Society in Gaza, West Bank and Arab Jerusalem*. FAFO Report 151, 1993.

PCBS. *Demographic Survey in the West Bank and Gaza Strip*. annual updates.

PCBS. *Population, Housing and Establishment Census 2007, Final Results- Housing Report - West Bank*. 2009.

PCBS, *Child Statistics Series*, annual updates.

Pedersen, Jon, Sara Randell & Marwan Khawaja (eds.). *Growing Fast - Palestinian Population in the West Bank and Gaza Strip*. FAFO Report 353, 2001. (also available at: www.fafo.no/pub/rapp/353/353.pdf)

Prime Minister's Office, State of Palestine & UNFPA, *PALESTINE 2030: Demographic Change: Opportunities for Development*, December 2016.

Al-Qass Collins, Kassis & Raheb (eds). *Palestinian Christians in the West Bank*. Bethlehem, 2012.