



# Population

## ■ General Demographic Features

		WBGS Total	West Bank	Gaza
<b>Total population</b>	<b>1997 census:</b>	2,895,683	1,873,476 <sup>1</sup>	1,022,207
	<b>2007 census:</b>	4,016,416	2,350,583	1,499,369
	<b>2016:</b> <sup>1</sup>	4,816,503	2,935,368	1,881,135
	<b>2020 projected:</b> <sup>3</sup>	5,370,000		
<b>Growth rate (2016)</b> <sup>1</sup>		2.8%	2.5%	3.3%
<b>Crude birth rate</b> per 1,000 pop. (2015) <sup>4</sup>		28.8	26.7	31.8
<b>Crude death rate</b> per 1,000 pop. (2015) <sup>4</sup>		2.9	3.0	2.7
<b>Fertility</b> (2014)		4.1	3.7	4.5
<b>Median age</b> (2015) <sup>4</sup> :		19.8 years	20.9	18.2
<b>Sex ratio</b> (male-female at birth, 2016) <sup>1</sup>		103.3	103.3	103.3
<b>Dependency ratio</b> (2015) <sup>4</sup>		73	67.4	82.7
<b>Life expectancy at birth</b> (2016) <sup>1</sup>		male: 72.1 / female: 75.2		
<b>Population density</b> (persons/km <sup>2</sup> , mid-2016) <sup>2</sup> : (Israel in comparison, 2015: 373.2 <sup>5</sup> )		800	519	5,154

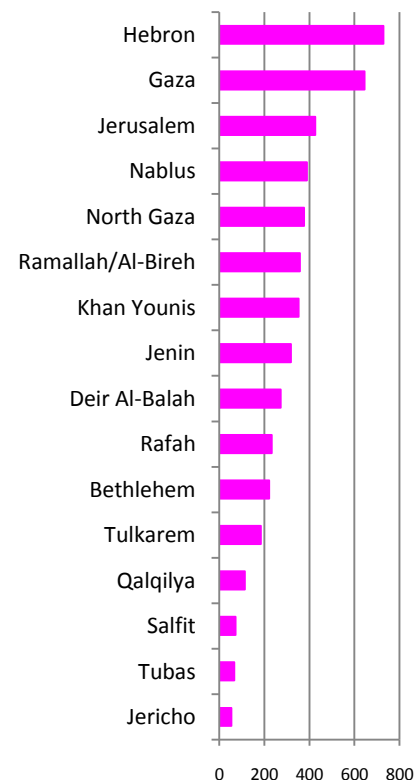
\*\* Incl. East Jerusalem.

Sources: <sup>1</sup> PCBS, *Population projections 2016*. <sup>2</sup> PCBS, *Press Release on International Population Day*, 11 July 2016. <sup>3</sup> PCBS, *Press Release on World Environment Day*, 4 June 2015. <sup>4</sup> Ministry of Health, *Health Annual Report Palestine 2015*, Oct. 2016. <sup>5</sup> Excl. WBGS, CBS, *Statistical Abstract of Israel*, 2015.

## Estimated Distribution of the Palestinian Population by Locality, mid-2016

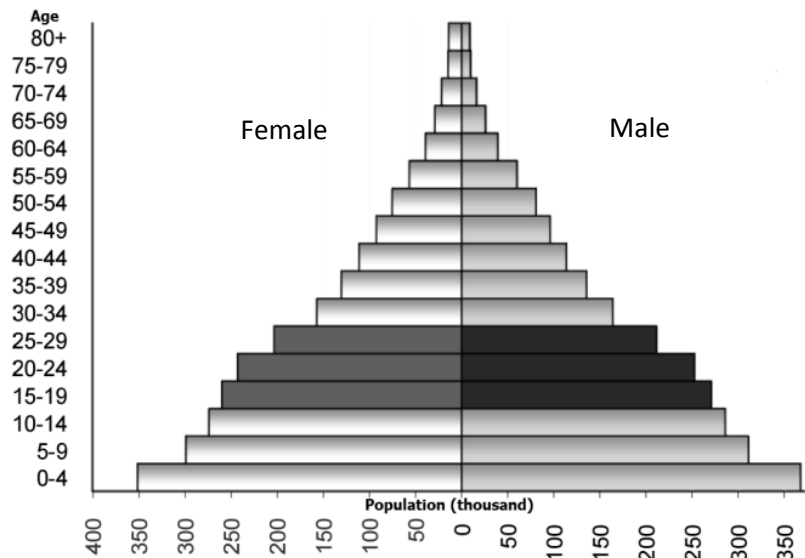
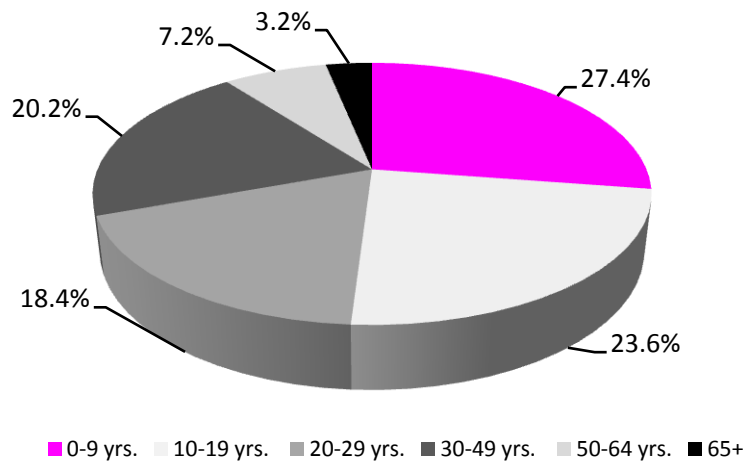
Locality	Governorate	City only
Jenin	318,958	48,479
Tubas	66,854	21,487
Tulkarem	185,314	60,173
Qalqilya	113,574	51,969
Salfit	72,279	10,673
Nablus	389,329	153,061
Ramallah/Al-Bireh	357,969	35,140/48,887
Jerusalem	426,533	264,937**
Jericho/Al-Aghwar	53,562	23,220
Bethlehem	221,802	31,799
Hebron	729,194	215,452
<b>Total West Bank</b>	<b>2,935,368</b>	
North Gaza	377,126	171,642 (Jabalia)
Gaza	645,204	583,870
Deir Al-Balah	273,381	72,409
Khan Younis	351,934	185,250
Rafah	233,490	164,000
<b>Total Gaza Strip</b>	<b>1,881,135</b>	
<b>Total WBGS</b>	<b>4,816,503</b>	

\*\* annexed East Jerusalem.



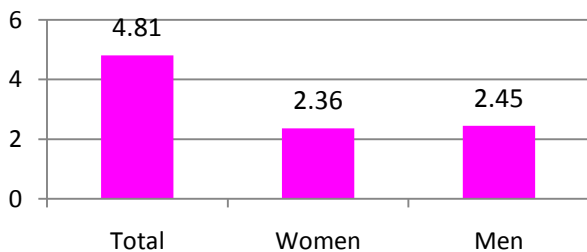
Source: PCBS, *Population Projections, Annual Statistics*.

### Age and Sex Structure, Palestine

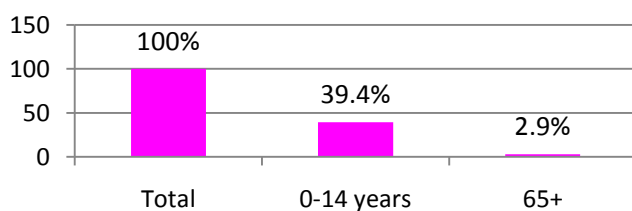


Sources: Age: PCBS, *Multiple Indicator Cluster Survey 2014 – Final Report*, Dec. 2015;

Sex: PCBS, *Press Release on International Youth Day*, 12 August 2015.

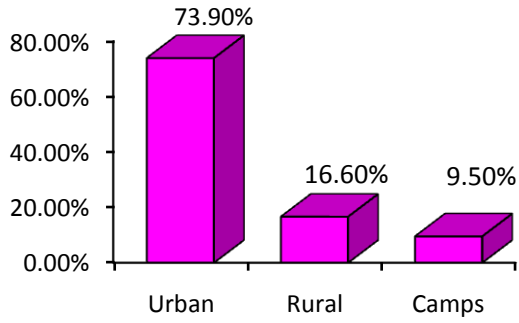


Of the estimated 2015 **population** of 4.81 million, 2.45 million were **males** (WB: 1.49 million, GS: 956,000), 2.36 million **females** (WB: 1.44 million, GS: 925,000) (PCBS, *Press Release on International Population Day*, 11 July 2016).



In mid-2016, the population aged **0-14 years** constituted 39.2% of the total WBGS population (WB: 36.9%, GS: 42.8%), and those **65 years or older** 2.9% (WB: 3.2%, GS: 2.4%) (*Ibid.*).

### Population Distribution by Place of Living



The percentage of the **urban** population in mid-2016 was some 73.9% while 16.6% of the Palestinians lived in **rural** areas and 9.5% in **refugee camps** (*Ibid.*).



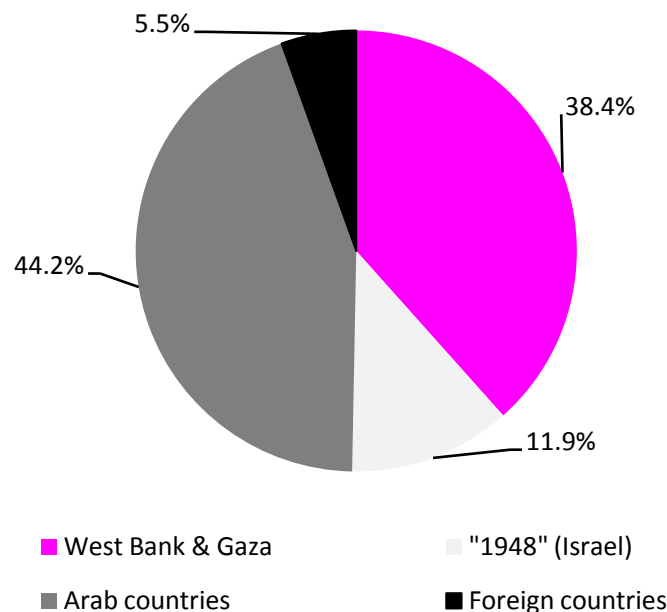
### ■ Distribution of the Palestinian people worldwide

The estimated Palestinian world population has increased 9-fold since the Nakba from 1.37 million in 1948 to an estimated 12.4 million by the end of 2015, some 6.2 million inside historic Palestine (4.81 million in the WBGs). Based on current growth rates, it is expected that this number will rise to 7.1 million by 2020 (PCBS, *Special Statistical Bulletin on the 68<sup>th</sup> Anniversary of the Palestinian Nakba*, May 2016).

### Palestinian Population Worldwide

		Population	in %	Total
<b>Inside</b>	West Bank & Gaza Strip	4,749,486	38.4%	<b>6,220,687</b>
	Israel proper ("1948")	1,471,201	11.9%	
<b>Outside</b>	Arab countries	5,459,678	44.2%	<b>6,145,074</b>
	Foreign countries	685,396	5.5%	
<b>Total</b>				<b>12,365,761</b>

Source: PCBS, *Palestine in Figures 2015, 2016*.



## ■ Population of Israel

	Population <sup>1</sup> (estimates, Aug. 2016)	2015 annual growth rate	Fertility rate(2015)	Median age (2015)	Projection (medium variant)	
					2020	2035
Jews	6,409,300 (74.8%)	1.9%	3.13	31.6	6,774,400	8,336,600
Arabs	1,782,400 (20.8%)	2.2%		22.6	1,952,300	2,614,800
- Muslims <sup>2</sup>	1,488,000	- 2.4%	3.32	- 21.5		
- Chris- tians <sup>2</sup>	165,900	- 1.5%	2.12	- 34.8		
Druze	137,3000	1.4%	2.19	27.1		
Others <sup>3</sup>	379,500 (4.4%)	3.9%	1.72	35.6		
<b>Total</b>	<b>8,571,200</b>	<b>2.0%</b>	<b>3.09</b>	<b>29.7</b>	<b>9,105,900</b>	<b>11,395,600</b>

<sup>1</sup> The CBS estimates differ from that of the Population, Immigration & Border Authority, because they only count Israelis living in Israel, while the Authority counts all Israeli citizens no matter where they are. The figures do not include 192,000 foreigners residing in Israel (as of the end of 2014); <sup>2</sup>at the end of 2015; <sup>3</sup> Non-Arab Christians and people not classified by religion.

Source: CBS, *Statistical Abstract 2016*.

- Between the establishment of Israel and end of 2015, approx. 3.2 million **new immigrants** came to Israel, about 42% of them since 1990. In **2015**, 27,908 new immigrants arrived - 16% more than in 2014. Most came from the Former Soviet Union (53%), mainly from Russia and Ukraine, as well as from France (24%) and the US (9%) (CBS, Media Release Immigration to Israel 2015, 25 May 2016).

According to the Israeli CBS (*Statistical Abstract 2016*):

- In 2015, Israel's population grew by 2%. **Natural increase** accounted for 134,266 people.
- In 2015, children **aged 0-14** in Israel made up 28.3% of the total population (Jewish children: 27.2%, Arab: 34.3%) and the percentage of those **aged 65+** was 11.1% (Jews: 13%, Arabs: 4.4%).
- In 2015, the average **life expectancy** for Israeli Jews was 80.9 years for men, and 84.5 years for women (3-4 years higher when compared to Arabs in Israel: 76.9 and 81.1 years).
- Israel's **population density** at the end of 2015 was 373.2 people/km<sup>2</sup> (excluding the WBGs).
- Some 75.9% of the Jewish population of Israel at the end of 2015 was **born in Israel**.
- Israel's **migration balance** (difference between the number of residents living more than a year abroad and the number of Israelis who returned to Israel after spending at least a year abroad) was negative in 2014, with a net loss of 6,800 people.
- In 2015, the largest **ethnic group** in Israel consists of Jews of European and American origin (34.1%), followed by those of African (13.5%) and Asian origin (10.1%).
- At the end of 2015, the **worldwide Jewish population** was estimated at 14.4 million, of which 6,335 million (44%) lived in Israel. The largest Jewish community **outside Israel** lived in the US (5.7 million), followed by France (460,000), Canada (388,000), UK (290,000), the Russian Federation (181,000), Argentina (180,000), Germany (117,000) and Australia (113,000).

## Recommended Research Sources:

---

<http://www.pcbs.gov.ps>

<http://www.cbs.gov.il/engindex.htm>

<http://www.palestineremembered.com/Acre/Palestine-Remembered/Story559.html>

**Harvard University**, *Population Projections for Socioeconomic Development in the Gaza Strip*, June 2006.

**Heiberg, M. & G. Ovensen**. *Palestinian Society in Gaza, West Bank and Arab Jerusalem*. FAFO Report 151, 1993.

**PCBS**. *Demographic Survey in the West Bank and Gaza Strip*. annual updates.

**PCBS**. *Population, Housing and Establishment Census 2007, Final Results- Housing Report - West Bank*. 2009.

**PCBS**, *Child Statistics Series*, annual updates.

**Pedersen, Jon, Sara Randell & Marwan Khawaja** (eds.). *Growing Fast - Palestinian Population in the West Bank and Gaza Strip*. FAFO Report 353, 2001. (also available at: [www.fafo.no/pub/rapp/353/353.pdf](http://www.fafo.no/pub/rapp/353/353.pdf))

**Al-Qass Collins, Kassis & Raheb** (eds). *Palestinian Christians in the West Bank*. Bethlehem, 2012.