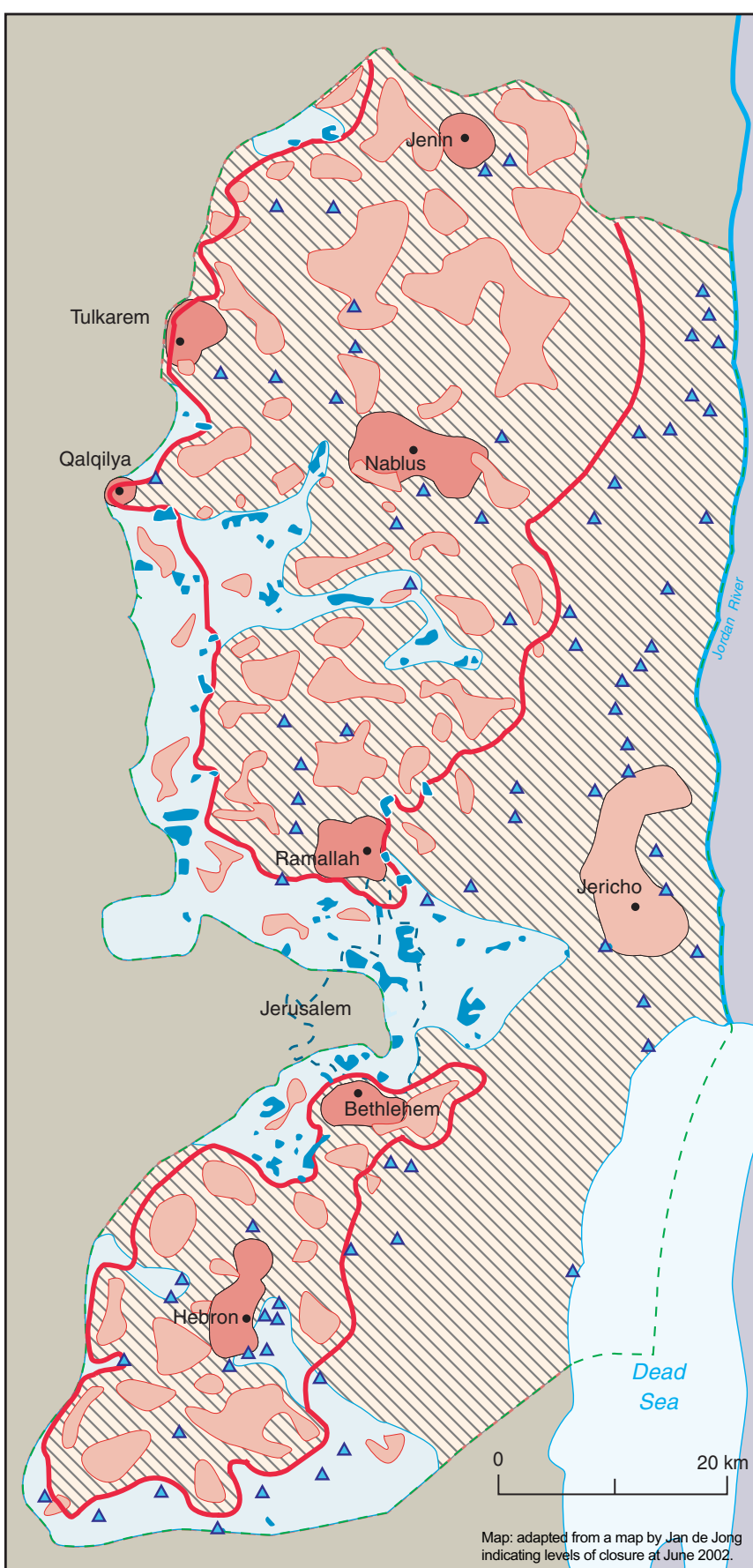


Small Map - Historic Palestine

- Area under total Israeli control, 2002
- Area under Israeli-imposed curfew or/and siege, 2002

Main Map - The West Bank

- Militarily occupied West Bank, 2002
- Palestinian towns and villages sealed by Israeli forces
- Palestinian urban centers reoccupied, sealed and under curfew
- Main settlement blocs
- Outer closure belt containing cantons
- Principal settlement
- Built-up area of urban 'anchor' settlement



Map: adapted from a map by Jan de Jong indicating levels of closure at June 2002.