



Population

■ General Demographic Features

	WBGS Total	West Bank	Gaza
Total population			
1997 census:	2,895,683	1,873,476	1,022,207
2007 census:	3,767,549		
2017 census¹:	4,781,248	2,881,957	1,899,291
2020 projected ² :	5,370,000		
Growth rate (2016)³	2.8%	2.5%	3.3%
Crude birth rate per 1,000 pop. (2016)³	30.9	28.5	35.8
Crude death rate per 1,000 pop. (2016)³	3.5	3.7	3.3
No. of persons aged 0-14 years (2017)¹	1,816,233 (=38.6%)		
Fertility (2017)¹	4.4	4.3	4.5
Median age (2016)⁴	20 years	21.2	18.4
Sex ratio (male-female at birth, 2017)¹	103.6	104.2	102.8
Dependency ratio (2016)⁴	72.3	66.6	82.1
Life expectancy at birth, male/female (2016)³	72.1/75.2	72.4/75.5	71.4/74.6
Population density (persons/km², 2017)¹	823	532	5,324
(Israel in comparison, 2016: 387.4⁴)			

** Incl. East Jerusalem.

¹ PCBS, *Population, Housing and Establishments Census 2017: Final Results*, 2018. Excludes East Jerusalem.

² PCBS, *Press Release on World Environment Day*, 4 June 2015. ³ PCBS, *Palestinians at the End of 2017*, March 2018.

⁴ Excl. WBGS, CBS, *Statistical Abstract of Israel*, No. 69, 2018.

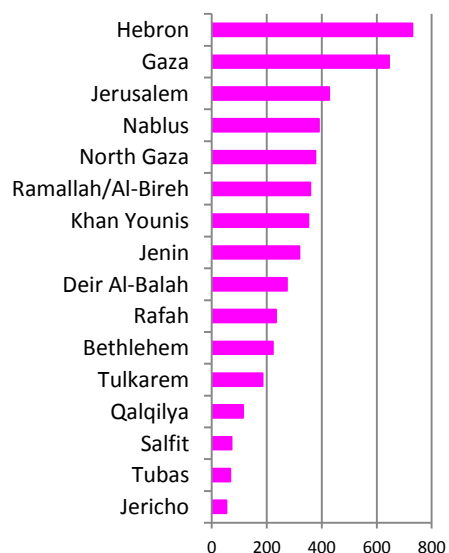
Estimated Palestinian Population by Locality, 2017

Locality	Governorate	City only
Jenin	314,866	49,908
Tubas	60,927	21,431
Tulkarem	186,760	64,532
Qalqilya	112,400	51,683
Salfit	75,444	10,911
Nablus	388,321	156,906
Ramallah/Al-Bireh	328,861	38,998/45,975
Jerusalem	435,753	281,163 ^a
Jericho/Al-Aghwar	50,002	20,907
Bethlehem	217,400	28,591
Hebron	711,223	201,063
Total West Bank	2,881,957	
North Gaza	368,978	172,704 ^b
Gaza	652,597	590,481
Deir Al-Balah	273,200	75,132
Khan Younis	370,638	205,125
Rafah	233,878	171,899
Total Gaza Strip	1,889,291	
Total WBGS	4,781,248	

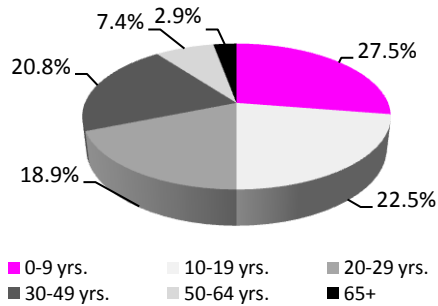
^a annexed East Jerusalem; ^b Jabalia

Source: PCBS, *Population, Housing and Establishments Census 2017: Census Final Results*, July 2018.

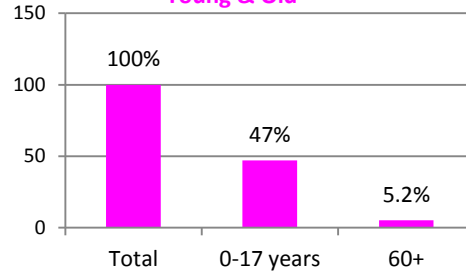
Population Distribution (in '000s)



Age Structure, Palestine

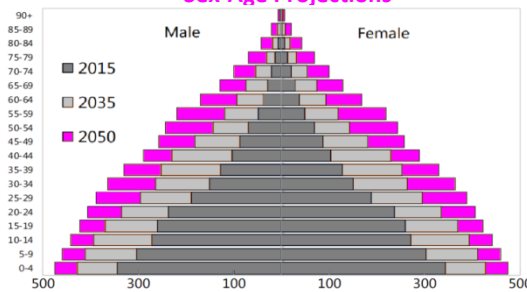


Young & Old



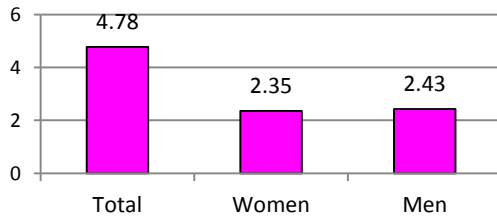
Source: PCBS, Population, Housing and Establishments Census 2017: Census Final Results, July 2018.

Sex-Age Projections



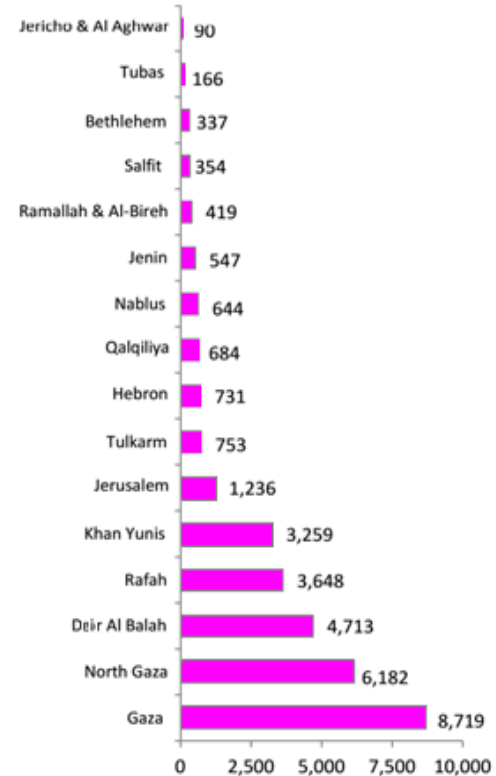
Source: IMF, West Bank & Gaza- Report to the AHLC, Aug.2017.

Population by Sex, 2017 (in million)

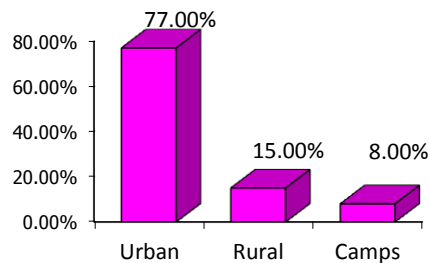


Of the 2017 population of 4.78 million, 2.43 million were males (WB: 1.47 million, GS: 963,000), 2.35 million females (WB: 1.41 million, GS: 936,000) (PCBS, Population, Housing and Establishments Census 2017, July 2018).

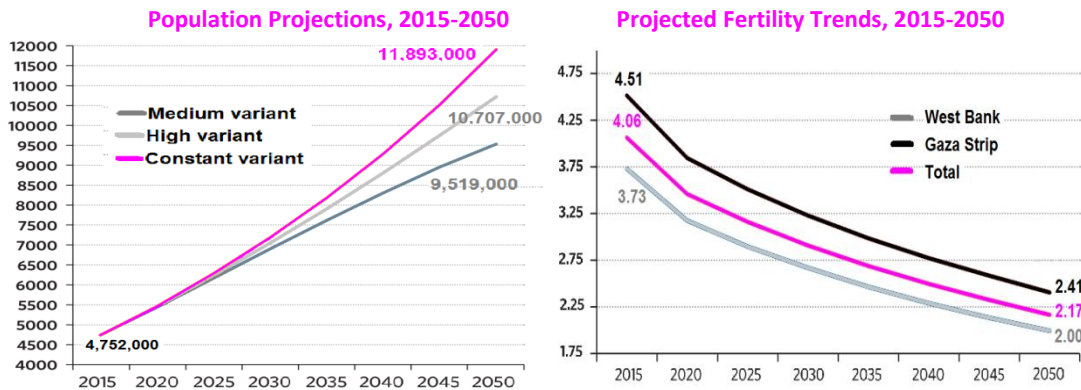
Population Density, 2016 (capita/km²)



Population Distribution by Place of Living



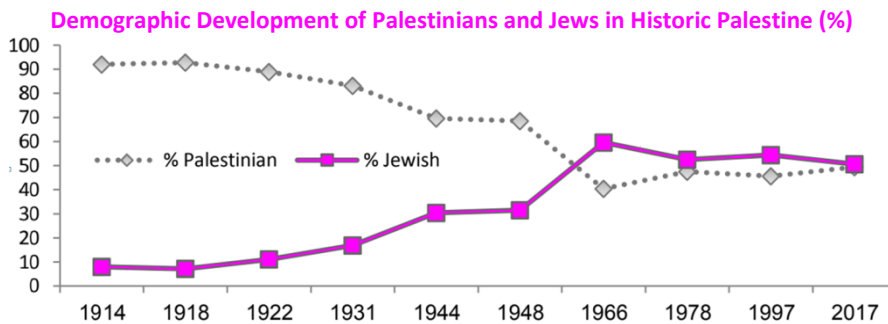
In 2017, 77% of the population lived in urban areas, 15% in rural areas, and 8% in refugee camps (Ibid.).



Source: Prime Minister’s Office, State of Palestine & UNFPA, *Palestine 2030: Demographic Change*, December 2016.

■ Distribution of the Palestinian people worldwide

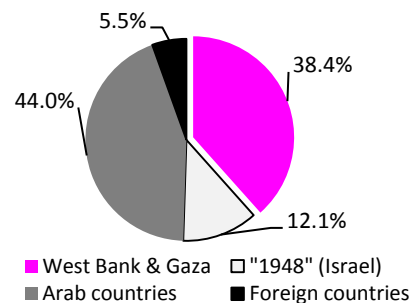
The estimated Palestinian world population has increased 9-fold since the Nakba from 1.37 million in 1948 to an estimated 13 million by the end of 2017, some 6.3 million inside historic Palestine (4.8 million in the WBGs), thus representing **49.4% of the total population of historical Palestine** (Israelis and Palestinians) (Awad, Ola, *On the 70th Anniversary of the Palestinian Nakba*, PCBS, May 2018).



Source: PCBS, Press Release on the Eve of the 70th Anniversary of the Palestinian Nakba, May 2018.

Palestinian Population Worldwide

		Population	Total
Inside	West Bank & Gaza Strip	4,781,248 ¹	6,341,248
	Israel proper ("1948")	1,560,000 ²	
Outside ³	Arab countries	5,594,683	6,290,360
	Foreign countries	695,677	
Total		(at least)	12,631,608



Source: ¹ PCBS, 2017; ² Israeli Central Bureau of Statistics, 2017.

³ PCBS, *Palestinians at the end of 2016*, December 2016.

■ Population of Israel

	Population* (estimates, July 2018)	2017 annual growth rate	Fertility rate(2017)	Median age (2017)	Projection (medium variant)	
					2025	2035
Jews	6,614,800 (74.7%)	1.7%	3.16	31.7	8,020,230 ²	9,528,269 ²
Arabs	1,860,300 (20.8%)	2.3%		23.2	2,168,098	2,605,156
- Muslims	1,561,700 (2017)	2.5%	3.37	- 22.1		
- Christians	133,600 (2017)	1.0%	1.93	- 35.3		
Druze	141,200 (2017)	1.4%	2.10	27.9		
Others ¹	416,700 (2017)	5.1%	1.658	36.2		
Total	8,891,800	2.0%	3.11	29.9	10,188,327	12,133,425

*NB: The CBS estimates differ from that of the Population, Immigration & Border Authority, because they only count Israelis living in Israel, while the Authority counts all Israeli citizens no matter where they are. The figures do not include 166,000 foreigners residing in Israel (as of the end of 2017).

¹ Non-Arab Christians (=38,300 in 2017) and people not classified by religion. ² Jews and others.

Sources: CBS, *Statistical Abstract 2018*; CBS, Time Series Data Bank, July 2018.

According to the Israeli Central Bureau of Statistics' (CBS) Statistical Abstract of 2018:

- In 2016, Israel's population grew by 2%. **Natural increase** accounted for 163,600 people (Statistical Abstract 2018, Table 2.12).
- In 2016, children **aged 0-14** in Israel made up 28.3% of the total population (Jewish & Others children: 25.3%, Arab: 33.7%) (Statistical Abstract 2018, Table 2.3).
- In 2015, the average **life expectancy** for Israeli Jews was 80.9 years for men, and 84.5 years for women (3-4 years higher when compared to Arabs in Israel: 76.9 and 81.1 years).
- Israel's **population density** at the end of 2015 was 380.2 people/km² (excl. the WBGS) (Table 2.23).
- Some 76.6% of the Jewish population of Israel at the end of 2016 was **born in Israel** (Table 2.9).
- Between the establishment of the state of Israel in 1948 and the end of 2016, over 3.2 million **new immigrants** came to Israel, about 42% of them since 1990. In **2016**, 25,977 new immigrants arrived – 6.9% less than in 2015. Most came from the Former Soviet Union (55.6%), mainly from Russia and Ukraine, as well as from France (16.3%) and the US (10.3%) (Table 4.4).
- Israel's **migration balance** (difference between the number of residents living more than a year abroad and the number of Israelis who returned to Israel after spending at least a year abroad) was negative in 2015, with a net loss of 8,200 people (Table 4.10).
- In 2016, 45.5% of the Israeli Jews were originally from **Israel**, 30.3% from **Europe and America**, 13.9% from **Africa** and 10.3% from **Asia** (Table 2.9).
- At the end of 2016, the **worldwide Jewish population** was estimated at 14.5 million, of which 6,446 million (44%) lived in Israel. The largest Jewish community **outside Israel** lived in the US (5.7 million), followed by France (456,000), Canada (390,000), UK (290,000), the Russian Federation (181,000), Argentina (176,000), Germany (117,000) and Australia (113,000) (Table 2.11).

Recommended Research Sources:

<http://www.pcbs.gov.ps>

<http://www.cbs.gov.il/engindex.htm>

<http://www.palestineremembered.com/Acre/Palestine-Remembered/Story559.html>

Harvard University, *Population Projections for Socioeconomic Development in the Gaza Strip*, June 2006.

Heiberg, M. & G. Ovansen. *Palestinian Society in Gaza, West Bank and Arab Jerusalem*. FAFO Report 151, 1993.

PCBS. *Demographic Survey in the West Bank and Gaza Strip*. annual updates.

PCBS. *Population, Housing and Establishment Census 2017, Census Final Results*, July 2018.

PCBS, *Child Statistics Series*, annual updates.

Pedersen, Jon, Sara Randell & Marwan Khawaja (eds.). *Growing Fast - Palestinian Population in the West Bank and Gaza Strip*. FAFO Report 353, 2001. (also available at: www.fafo.no/pub/rapp/353/353.pdf)

Prime Minister's Office, State of Palestine & UNFPA, *PALESTINE 2030: Demographic Change: Opportunities for Development*, December 2016.