

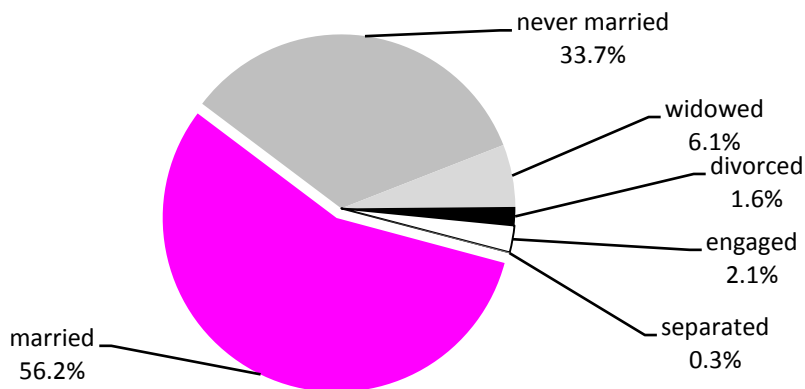


Women

- Women account for **49.2%** of the total Palestinian **population** of 4.75 million (PCBS, *Press Release on International Women's Day 2016*, 8 March 2016).
- Within Palestinian society, over half (56.1%) of the women aged 15 years and above are **married**.
- Some 4.8% of the total population is **60 years and older**: 3.4% male and 5.2% female (PCBS, *Multiple Indicator Cluster Survey 2014 – Final Report*, Dec. 2015).
- In 2015, 10.9% of all Palestinian **households** were **headed by females** (WB: 12.2%, GS: 8.6%) (PCBS, *Press Release on the Eve of International Population Day*, July 2016).



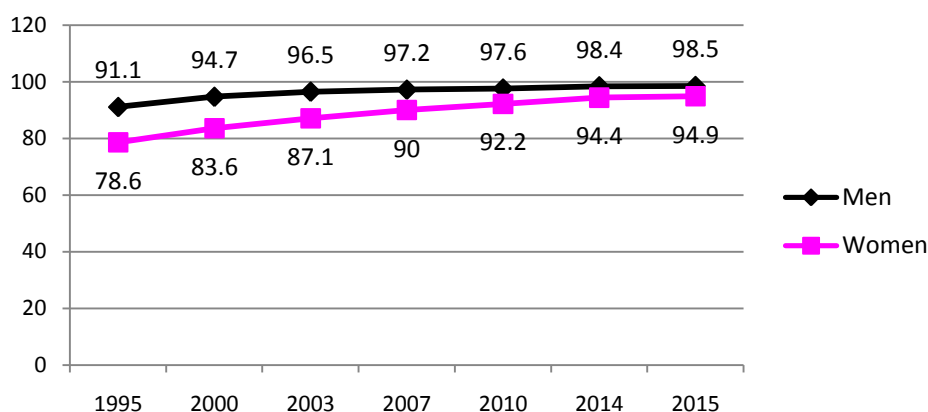
Marital Status of Women Aged 15+ Years



Source: PCBS, *Press Release on International Women's Day 2016*, 8 March 2016.

- 24.2% of women aged 20-49 years got **married before the age of 18** (WB: 21.4%, GS: 28.6%) (PCBS, *Multiple Indicator Cluster Survey 2014 – Final Report*, Dec. 2015).
- Of the women aged 15-49 years, 2.1% were **married before age 15** (WB: 1.8%, GS: 2.6%) and 4.3% were in a **polygamous marriage** (WB: 3.2%, GS: 5.8%) (*Ibid.*). Some 22% of the women aged 20-24 years **gave birth before the age of 18** (WB: 19.6, GS: 25.1%) (PCBS, *Press Release on International Women's Day 2016*, 8 March 2016).
- Of the women **aged 15-29 years**, 40.8% are married, 4.9% engaged (PCBS, *Press Release on International Youth Day 2016*, 12 August 2016).
- The **literacy rate** of women has improved considerably over the last two decades, but is still higher than that of men:

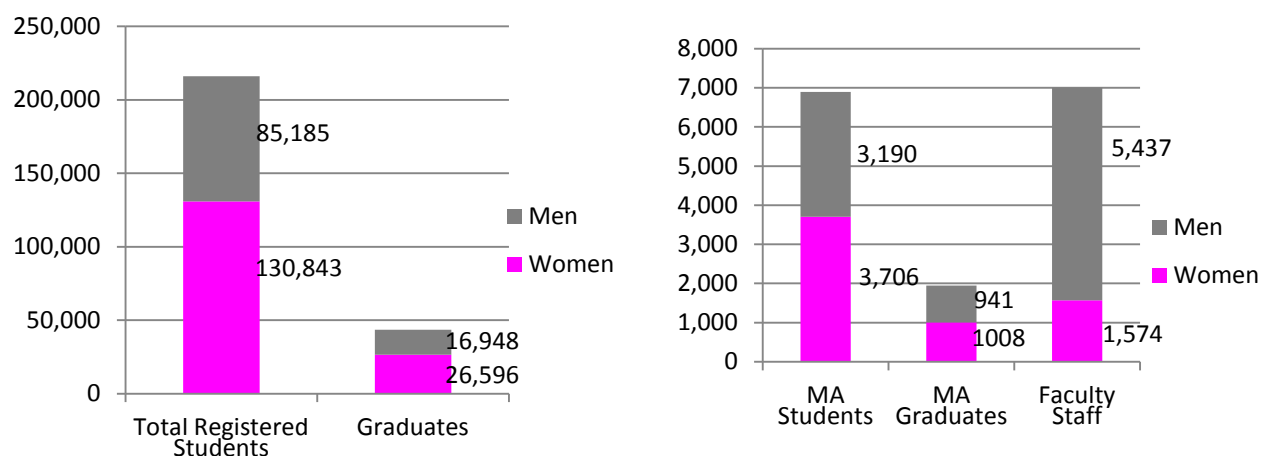
Literacy Rate of Palestinian men and Women (15+ Years), 1995-2015



Source: PCBS, Press Release on International Women's Day 2016, 8 March 2016.

- Females constituted **50.4% of all school students** in the scholastic year 2015/2016 (Ministry of Education, 2016).
- **Female enrollment in higher education** is higher than that of males, and more women than men hold a university degree. In 2015, 60.6% of all students registered at institutes of higher education were female as were 53.7% of those studying towards an MA, 61.1% of all graduates and 51.7% of those graduating with an MA. However, women made up only 22.4% of all academic faculty staff (*Ibid.*).

Women in Higher Education

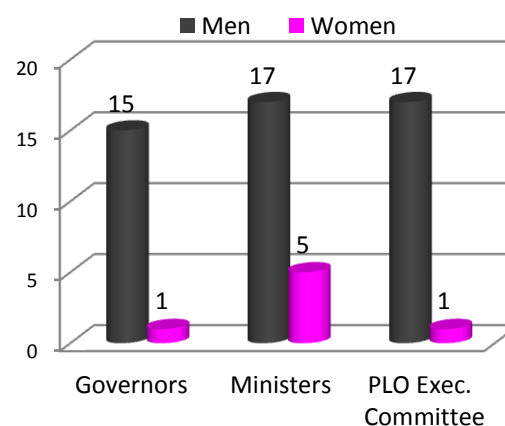


Source: Ministry of Education and Higher Education, 2015/2016 Statistics.

- Women remain **underrepresented in decision-making bodies** as well as with regard to **public roles** or senior administrative and political posts: only one of 18 **PLO Executive Committee** members, 5 of 22 **ministers** and one of 16 **governors** (Ramallah/Al-Bireh) are female. In 2014, females represented 41.8% of total employees in the **public sector**, but less than 5% occupy assistant undersecretary positions in PA ministries. Moreover, women comprise, also thanks to the quota system used, 12.9% of the **PLC** members and 21% of the total **local authority** members (PCBS, Press Release on International Women's Day 2016, 8 March 2016; previous years). In comparison, in 2016, the average proportion of women in parliaments in the Middle East/North Africa was 16% and worldwide 23% (World Bank data).

on Social Development, <http://wdi.worldbank.org/table/1.5>). The situation is similar in **political parties**: in the most recent Fatah elections (August 2009), not one woman was elected to the main governing body (Central Council), while in the legislative body (Revolutionary Council) only 11 of 120 members are female (Azzouni, Suheir, "Palestine - Palestinian Authority & Israeli-Occupied Territories," in *Women's Rights in the Middle East & North Africa: Progress Amid Resistance*, NY, 2010).

- For details on **women's work** see page 415. **Women's low representation** across all sectors is also evident from the following table:



Women Representation in Various Sectors

Registered physicians	15.2%	Diplomatic staff (PLO Ambassador)	5.8%
Registered dentists	29.5%	Public Sector/civil servants	41.8%
Registered nurses	50.5%	Legal judges	15.6%
Registered pharmacists	55.8%	Shari'a court judges	7.2%
Medical Association member	13.6%	Public prosecutors	16.4%
Dental Association member	27.3%	Civil Police personnel	3.4%
Engineers	19.9%	Military justice system personnel	2%
Journalists	25%	PLC members	12.9%
Editors	10%	Local Council members	21%
Employees in Banks	28%	Ministers	12%
Members in sports clubs	2.3%	Researchers	22.6%
Members in societies	3.2%	Student council members	26.8%
Members in youth movement	0.4%	Members in political parties	0.7%

Sources: PCBS, *Women and Men in Palestine: Issues and Statistics*, 2014; PCBS, *Press Release on International Women's Day*, 2016; PCBS, *A Review of Palestinian Justice and Security Sector Data*, Aug. 2013.